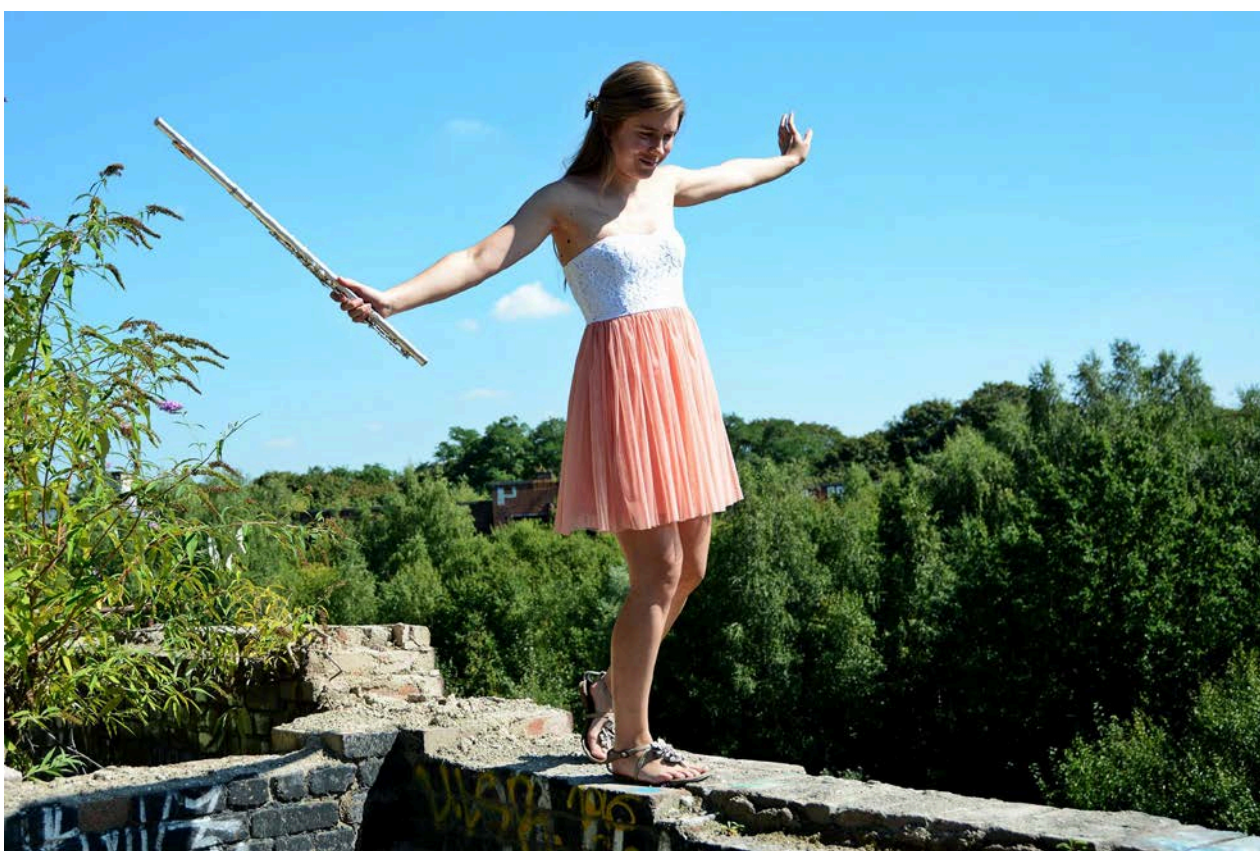




CONSERVATOIRE ROYAL DE LIÈGE
ÉCOLE SUPÉRIEURE DES ARTS DE LA FÉDÉRATION WALLONIE-BRUXELLES



PRESENTATION BROCHURE

CONSERVATOIRE ROYAL DE LIÈGE – MUSIC

22-23

TABLE OF CONTENTS

I/ THE CONSERVATOIRE ROYAL DE LIEGE	3
1/ PRESENTATION OF THE SCHOOL	3
2/ PEDAGOGICAL PROJECT	4
3/ THE MANAGEMENT BODIES	6
4/ PREMISES	7
5/ LIBRARY	9
6/ INSTRUMENTAL RESERVE	10
7/ WEBSITE	10
II/ TEACHING	11
1/ TRAINING COURSES	11
2/ REGISTRATION AND RE-REGISTRATION	14
3/ ORGANISATION OF STUDIES	14
4/ INTERNATIONAL RELATIONS	18
5/ LANGUAGE	19
III/ EVENTS AND PARTNERS	22
1/ THE CONSERVATORY'S EVENTS	22
2/ CULTURAL PARTNERS	24
IV/ STUDENT LIFE	28
1/ CULTURAL VENUES	28
2/ SPORT	29
V/ PRATICAL INFORMATION	30
1/ ADDRESSES AND ACCESS	30
2/ OPENING HOURS	30
3/ TEACHING TEAM	31



1/ PRESENTATION OF THE SCHOOL

The Conservatoire royal de Liège is a **HIGHER ARTS SCHOOL** of the Wallonia-Brussels Federation which offers higher level artistic training (Bachelors, Masters and Aggregations) in the field of **MUSIC** and **THEATRE**.

Founded in **1827**, it is one of the oldest conservatories in Europe offering a professional music curriculum. With about thirty students at its creation, the population of the Conservatoire did not stop growing in the 19th century. It was at this time that the school trained great musicians such as César Franck, Eugène Ysaÿe and Henri Vieuxtemps. The Conservatoire royal de Liège continued to structure and develop throughout the 20th century. In 1930, the Theatre section was created within the school. Since the 1970s, thanks in particular to the initiative of Henri Pousseur, the school has become a key place for contemporary creation and improvisation, both in music and in theatre. As an internationally renowned artistic institution, it currently has more than 350 students and more than hundred teachers.

Since 2014, **NATHANAËL HARCQ** is the director of the Conservatoire royal de Liège (and responsible for the training of actors). Since 2021, **KATHLEEN COESSENS** is the director of the Domain of Music.



BY DECREE

The pedagogical and artistic project of a College of Arts implements the general objectives of higher arts education defined by decree¹:

« The Conservatoire royal de Liège's main mission is to develop the intellectual and artistic abilities of its students, in order to help them achieve their full potential in professional life. The teaching at the Conservatoire seeks to be as close as possible to the realities of the musical and theatrical life of its time. The Conservatoire seeks, in particular by preserving the richness of the teacher-student relationship, to train complete artists who can enrich the cultural and intellectual life of society through their achievements as performers, creators or teachers [...]. The Conservatoire's mission is also to prepare students for the teaching of artistic disciplines both in Belgium and abroad »².

BECOMING A CREATIVE MUSICIAN IN SOCIETY

*Education, and even more **artistic education**, is a challenge by definition: a challenge to every status quo, every generation, every society, its knowledge and skills. It is a forward-looking and optimistic practice, rooted in tradition, based on commitment and competence, vision and exchange, experience and creativity, the individual and society. It is also a challenge and a commitment of and in today's society, as education must be more than a production process measurable by numbers that reflect output and efficiency.*

*A music education must therefore listen to **the sounds of society** and create its own sound. It must ask itself what forms of creativity and aesthetic intent it offers - can and should offer - on a personal, social and cultural level. Music education, and by extension a conservatory, is unique in this: it has to be conservative AND rebellious as it can only be a "conservatory" IF it is also a "laboratory". It must ask the questions of how its artistic practice fits into society at large, and how tradition fits into the present and the future. It must confront society with its own paths of knowledge, its own practices of reflection and creation, its capacity to artistically question the prevailing vision of the world, in a continuous and open way.*

***Creative and social openness** is a necessity for our Conservatoire because the training of young generations of musicians is a responsibility towards society and future generations. It is an asset because we are convinced of the special contribution that young musicians can make to society and the outer world, nationally and internationally. This also means paying special attention to artistic and cultural diversity, an openness to encounter and exchange, cross-fertilisation between different fields and disciplines (between theatre and music within the Conservatoire, connections with tradition, wider interactions in the cultural field).*

¹ [Décret relatif à l'enseignement supérieur artistique](#)

² Pedagogical project of the Domain of Music of the Conservatoire royal de Liège

*The musician, the artist, the student, the teacher, the music lover, they are all involved in this. This is why I believe that a director must frame his or her mandate in **an open and respectful mission** where sustained pedagogy, artistic excellence, profound dialogue, a critical research attitude, social and creative openness, and finally local and international outreach join. It goes without saying that these concepts and their necessary actions connect, complement and overlap, like the different threads in a weave.*

*Any artistic journey, and in music education any relationship with a growing musician, must dare to take up these challenges and must constantly **question the relationships between individuals, art, culture, and the world**. As Nathanaël Harcq, Director of the CrLg, wrote: "A place where questions are no longer asked is not alive" (in 'Les actes, Fabrique de pouvoirs').*

Music is everywhere, just listen,

Kathleen Coessens
Director of the Domain of Music

ARTISTIC-PEDAGOGICAL PROJECT of the Domain of Music

THE ARTIST-MUSICIAN : A CREATIVE AND RESPONSIBLE CITIZEN

an open and respectful mission involving six key paths:

- *sustained pedagogy linking past and future*
- *artistic excellence open to the needs of the 21st century*
- *profound institutional and inter-artistic dialogue,*
- *critical and reflexive attitude of research and practice in the arts,*
- *cultural, social and creative openness*
- *local and international outreach*

Pedagogical project of the Domain of Music



THE PEDAGOGICAL MANAGEMENT BOARD (PMB)

The Pedagogical Management Board (PMB) elaborates the pedagogical project and gives advice on the school's orientations, proposals for the appointment of teachers and administrative staff, as well as on budgetary matters. The PMB is composed of the Director, the Director of the Music Department and a team of representatives of the professors, assistants, lecturers, administrative staff and workers, the union and the students of the ESACT and the Music Department.

THE COUNCIL OF THE DOMAIN OF MUSIC (CDM)

The Council of the Domain of Music makes pedagogical and artistic proposals for the Domain of Music, which are then voted on by the Pedagogical Management Board. The Domain Council is composed of the Domain Director, the Chair of each option, representatives of the teaching staff of all options and sections and student representatives.

THE SOCIAL COUNCIL

The Social Council provides financial assistance to Conservatoire students either through an individual grant awarded once a year or through assistance with expenses incurred in events related to their studies. It brings together two student representatives from each field, one teacher representative from each field, a social worker, an accountant, two secretaries, the Director General and the Director of the Domain of Music. **Applications to the Social Council are available from Stéphanie Deffense (stephanie.deffense@crlg.be).**

THE STUDENT COUNCIL (SC)

The Student Council represents the students of the Conservatoire royal de Liège in the various councils (CGP, Domain Council, Social Council). It acts as a link between the administration, the management, the teachers and the students. The members of the Student Council are also involved in actions aimed at improving the quality of teaching conditions in the school.

THE UNION OF TEACHERS, STUDENTS AND ALUMNI (UTSA)

The Union of Professors, Students and Alumni is an association that aims to support student projects through the awarding of prizes, financial support for artistic projects and occasional assistance in the form of financial loans to students who have difficulty paying their tuition fees.

4/ PREMISES

The teaching activities of the Domain of Music take place on the Forgeur site, which consists of 6 buildings:

Annex A (Rue Forgeur, 14): auditoriums A006 and A204, library and instrumental storeroom, reception desk, classrooms

Annex B (Rue Forgeur, 14): classrooms (including percussion classes)

Annex C (Bd Piercot, 29): meeting rooms, administrative services, mixed composition studio and classrooms

Annex D (Rue Forgeur, 22): Espace Henri Pousseur, classrooms

Annex E (Rue Forgeur, 18): cafeteria, classrooms, student rooms

Annex F (Rue Forgeur, 11): classrooms





BOOK A ROOM

The classrooms of the Conservatoire royal de Liège, when not occupied by teachers for lessons, are available to students for study.

When can a class be booked to study?

Teachers can book a class whenever they want. Students can only book a class **the day before from 7pm on**. Reservation of a room is possible **during the opening hours of the Conservatory**.

Which class can be booked?

All the rooms on the Forgeur site during opening hours except the auditoriums (room A006, Espace Pousseur, A204). To use these rooms, a reservation can be made online on [the HORIZON application](#).

The presence or absence of one or more pianos is indicated on the booking site.

For how long can a class be booked?

It is possible to book a maximum of 2 hours per room and a maximum of 4 hours per day per student.

At the end of these 4 hours, if rooms are still available, it is possible to reserve another 2 hours.

5/ LIBRARY

The Domain of Music has a library with over **83.500 documents**. Users can consult or borrow a large number of scores, scientific works on musicology and periodicals related to the musical world. Among these works are **manuscripts by César Franck and Eugène Ysaÿe**, who both studied at the Conservatoire royal de Liège.

The full catalogue is available [here](#).

OPENING HOURS (DURING SCHOOL TIME):

- MONDAY TO THURSDAY FROM 10AM TO 1PM (READING ROOM)
 - MONDAY TO THURSDAY FROM 2PM TO 5PM & FRIDAY FROM 10AM TO 1PM (LOAN COUNTER)
-



6/ INSTRUMENTAL RESERVE

In the course of its 190 years of existence, the Conservatoire royal de Liège has built up a considerable heritage, including its collection of instruments. The instrumental collection includes more than **200 INSTRUMENTS**: strings, plucked strings, woodwinds, brass instruments and keyboards. Apart from a few violins, the oldest of which dates from the end of the 17th century, these are mainly 19th and 20th century instruments, some of which are of real interest. A restoration program for educational use is underway. In addition to the strings, more recent instruments (second half of the 20th century), mainly woodwinds and some brass instruments, are in playing condition and can be made available to students as study instruments.

7/ WEBSITE

The Conservatoire royal de Liège has its own website, on which you can find news from the music and theater fields every month.

<https://www.crlg.be/>

Several classes of the Conservatoire royal de Liège have their own website:

[Classical writing](#)

[Organ](#)

II/ TEACHING

1/ TRAINING COURSES

The Conservatoire royal de Liège is a **HIGHER ARTS SCHOOL (HAS)** which provides a short (3 years) and long (5 years) artistic education organized by the Wallonia-Brussels Federation.

Within the framework of the Décret Paysage, music studies at the Conservatoire royal de Liège are organized in two cycles. The first cycle (180 credits) leads to the academic grade of **BACHELOR OF QUALIFICATION** or **TRANSITIONAL BACHELOR**. The latter gives access to the Master of Music degree. The second cycle (120 credits) leads to the academic degree of **MASTER**.

TRANSITIONAL BACHELORS (FIRST CYCLE)

The Conservatoire royal de Liège offers several long courses in various specialties. The bachelor of transition is a three-year course that gives access to the second cycle. In the third block, students have the possibility to follow elective courses that will allow them to approach or deepen specific knowledge (e.g.: early music).

LIST OF GRADUATES OF THE CONSERVATOIRE ROYAL DE LIÈGE	
<u>Bassoon</u>	<u>Organ</u>
<u>Cello</u>	<u>Percussion</u>
<u>Clarinet</u>	<u>Piano</u>
<u>Composition</u>	<u>Saxophone</u>
<u>Double bass</u>	<u>Trombone</u>
<u>Flute</u>	<u>Trumpet</u>
<u>French horn</u>	<u>Tuba</u>
<u>Guitar</u>	<u>Viola</u>
<u>Harp</u>	<u>Violon</u>
<u>Mandolin</u>	<u>Vocal</u>
<u>Oboe</u>	



BACHELORS OF QUALIFICATION (FIRST CYCLE)

Music Education

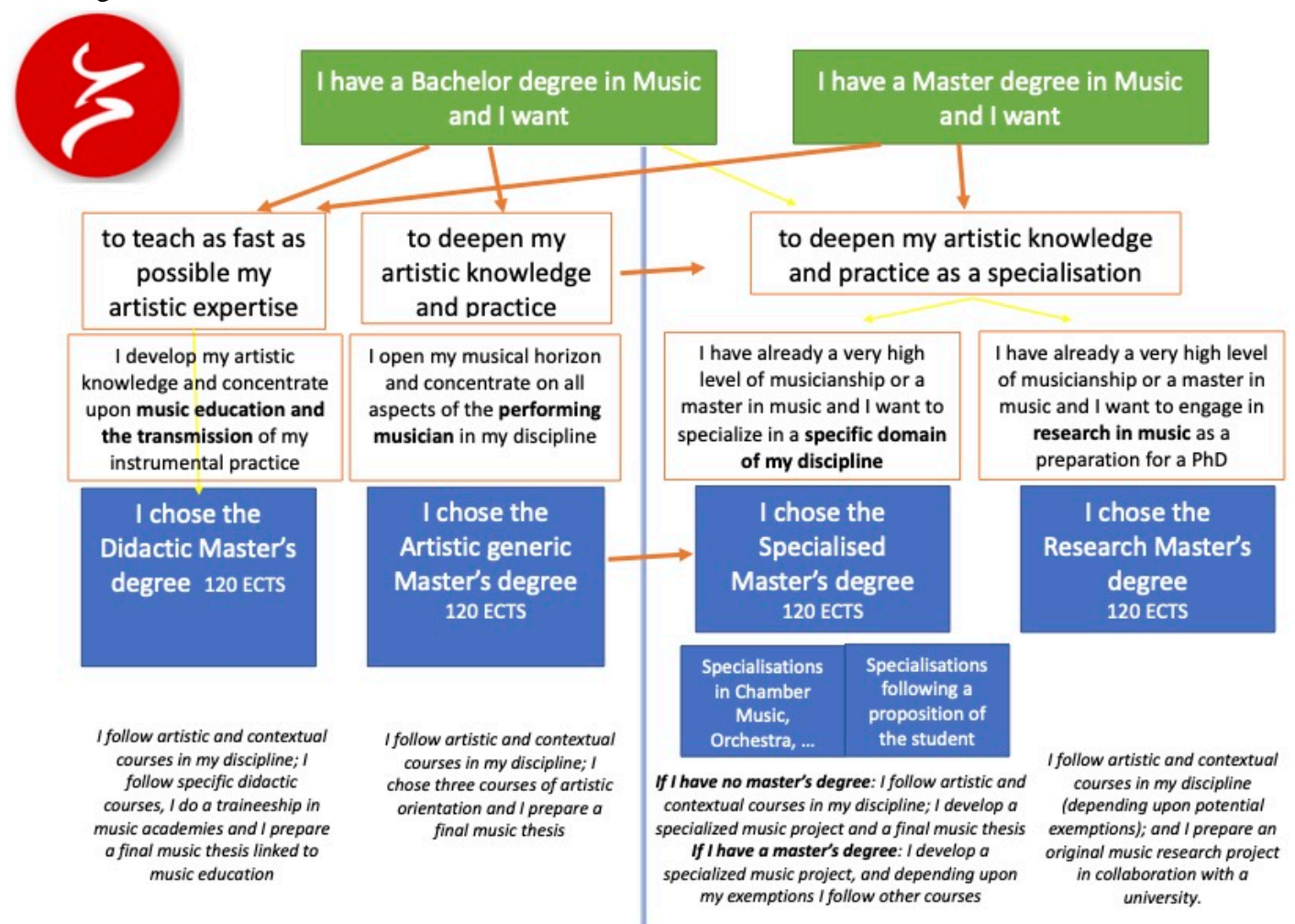
Since 2014, the Conservatoire royal de Liège offers a short course in music education. This three-year course leads to a **Bachelor of Music qualification**, which allows students to work in academies or in lower secondary education. This course requires a **C1 level command of the French language**.

Music Improvisation and Oral Tradition

From 2022-2023 on, the Conservatoire royal de Liège will offer a three-year program in Music Improvisation, where the student will discover and practice by way of different projects with experts different fields of improvisation from ancient music over folk and world music, to classical music and the jazz world.

MASTERS (SECOND CYCLE)

The Music Department of the Conservatoire royal de Liège offers four types of Master's degree (120 credits): generic artistic, didactic, specialized and in-depth. The latter three offer a specific 30-credit final degree.



GENERIC ARTISTIC MASTERS

This Master's degree is designed for students who wish to become performing and creative artists. Musical skills are developed. In order for the student to explore various musical themes, a choice of artistic orientation courses is offered.

MASTERS WITH A DIDACTIC FOCUS

This master's degree is intended for students interested in teaching. This course of study gives access to a title that allows you to teach in an academy or in secondary education.

Warning: this Master's degree requires a **C1 level command of the French language**. It allows you to teach **only in Belgium**.

LIST OF DIDACTIC MASTERS OF THE CONSERVATOIRE ROYAL DE LIÈGE	
<u>Bassoon</u> <u>Cello</u> <u>Clarinet</u> <u>Classical writing</u> <u>Composition</u> <u>Double bass</u> <u>Flute</u> <u>French horn</u> <u>Guitar</u> <u>Harp</u> <u>Lyrical art</u> <u>Musical training</u>	<u>Oboe</u> <u>Mandolin</u> <u>Organ</u> <u>Percussion</u> <u>Piano</u> <u>Saxophone</u> <u>Trombone</u> <u>Trumpet</u> <u>Tuba</u> <u>Viola</u> <u>Violin</u> <u>Vocal</u>

SPECIALISED MASTERS

This course is designed for students who wish to develop a career as a professional artist at the highest level. It is often taken after a didactic or generic master's degree. It offers the possibility of acquiring professional and artistic skills concerning a specific subject of the discipline. The different specializations are done according to the specific list below (defined specialization), or may apply for a specialization other than this list (undefined specialization).

OPTIONS OF SPECIALIZED MASTERS

- **generic and artistic (black)**
- **defined options of specialized purpose (yellow: indicative list)**
- **Bassoon** (second instrument | chamber music | orchestra)
- **Cello** (contemporary music | chamber music | orchestra)
- **Clarinet** (second instrument | chamber music | orchestra)
- **Composition** (mixed composition | orchestration)
- **Choral conducting**
- **Classical writing**
- **Double bass** (chamber music | orchestra)
- **Flute** (second instrument | chamber music | contemporary music | orchestra)
- **French Horn** (second instrument | chamber music | orchestra)
- **Guitar** (contemporary music | chamber music)
- **Harp** (chamber music | orchestra)
- **Lyrical art**
- **Mandolin** (chamber music)
- **Oboe** (second instrument | chamber music | orchestra)
- **Orchestra conducting**
- **Organ** (early music)
- **Percussion** (orchestra | chamber music)
- **Piano** (chamber music | soloist)
- **Piano accompaniment**
- **Saxophone** (second instrument | chamber music | orchestra)
- **Trombone** (second instrument | chamber music | orchestra)
- **Trumpet** (second instrument | chamber music | orchestra)
- **Tuba** (second instrument | chamber music | orchestra)
- **Viola d'amore**
- **Violin** (chamber music | orchestra)
- **Vocal** (early music | chamber music)
- **Viola** (chamber music | orchestra)

ADVANCED MASTERS

This course is intended for students who are interested in artistic research and wish to prepare a doctorate. It is offered in collaboration with a university in Belgium.



2/ REGISTRATION AND RE-REGISTRATION

Admission to the Conservatoire royal de Liège is subject to several conditions and to passing an entrance exam. **The application for enrolment can only be made online:** [Apply online](#)

Registration at the Conservatoire royal de Liège is possible **UNTIL 30 SEPTEMBER 2022**, after this date it is necessary to obtain an authorization from the Government.

For more information on how to register: inscription@crlg.be

3/ ORGANISATION OF STUDIES

ANNUAL STUDENT PROGRAMME

The **Annual Student Programme (ASP)** consists of a set of **teaching units (TU)** containing one or more **learning activities (LA)**. Successful completion of these units leads to the award of **credits (ECTS)**.

The **block** is the chronological division of the study program of a cycle into a set of UE totaling 60 credits. The Bachelor's cycle offers 3 blocks of 60 credits and the Master's cycle 2 blocks of 60 credits.

The program of a student enrolling for the first time in an undergraduate program must include the first 60 credits of the first block of the study program. Thereafter, the student's annual program (PAE) is made up of Teaching Units (UE) registered in the teaching profile, respecting the conditions of prerequisites and corequisites, so as to reach at least 60 credits, except for the exceptions provided for by the decree.

If you would like to obtain **credit** for previous higher education studies and/or professional or personal experience, you should apply to the academic adviser **as soon as possible:** sebastien.kreins@crlg.be.

The EAP must be signed by the student and validated by the study committee. As for the requests of valorization, they must be requested at the latest **BEFORE 15 OCTOBER 2022**.

To establish your EAP, you must make an appointment with Sébastien Kreins at the beginning of the school year: sebastien.kreins@crlg.be.



TIMETABLES AND PREMISES FOR LEARNING ACTIVITIES

To find out what your course schedule is, you should refer to the standard learning description for your course, which you can find at the study department or [on the Conservatoire website](#).

GROUP COURSES (history of music, psychology, philosophy...) are given at fixed times, over one or two terms. The complete schedule of group classes is published on the school website and posted in the main hallway at the beginning of the academic year.

The timetable of the **MUSICAL TRAINING** courses depends on the level of the students. To form the groups, the teachers give a test on Monday 14 September from 1pm to all new students in B1 and B2. Some students with difficulties are also invited to follow reinforcement courses, in addition to the common curriculum.

The specific and personal teaching of music implies that many **ARTISTIC CLASSES** are given in small groups or individually (instrument, practical harmony, writing...). The timetable for these courses is to be agreed with the teachers in charge of the course at the beginning of the year. You can contact all the teachers at the Conservatoire by e-mail at the following address: prenom.nom@crlg.be. The list of teachers is given at the end of this guide.

The functioning of the **WRITING** and **CHAMBER MUSIC** classes being particular, it is necessary to go to the different meetings of the teachers responsible for these classes. The dates of the information meetings will be posted in the main hall at the beginning of the year. We also invite you to contact the teachers concerned as soon as the school year starts.

The student is expected to attend the learning activities for which he/she is registered. **IN CASE OF DELAY OR ABSENCE**, you must apologise to the teacher in charge before the course and write an e-mail to accueil@crlg.be. Proof of absence for legitimate reasons (accident, illness, force majeure) must be submitted to the student services (service.etudes@crlg.be) within three days of the first day of absence.

To find out more about your course timetable, we invite you to contact the teachers concerned at the beginning of the school year and/or to send an e-mail to horaires@crlg.be.



REGISTRATION FEES

The amount of the minerval depends on the type of training (short or long), the level of study and the student's situation:

Type of training	Students receiving grants from the Walloon Federation Brussels	Students of modest means	Other students
Short type - regular years	0€	64.01€	175.01€
Short type - graduating year	0€	116.23€	227.24€
Long type - regular years (Bachelor & Master)	0€	239.02€	350.03€
Long type - graduating years (Bachelor & Master)	0€	343.47€	454.47€

In addition to this amount, students from outside the European Union must pay a specific registration fee:

Short course	992€
Long course - Bachelor	1487€
Long course - Master	1984€

To validate the student's registration, it is necessary to **50€ BEFORE 15 OCTOBER 2022. THE BALANCE MUST BE PAID BEFORE 31 JANUARY 2023.**

The registration fee is to be paid into the school's account:

Conservatoire royal de Liège

BE03091212057284

BIC : GKCCBEBB

Communication : Musique 22-23 + Nom de l'étudiant

For more information on the amount of your registration fee and the payment methods, please contact the accounting department: stephanie.deffense@crlg.be



EVALUATIONS

Each learning activity is described in terms of objectives, teaching methods and assessment methods (oral or written examination, continuous assessment, etc.).

Consult the descriptions and teaching profiles

Only students who are regularly enrolled at the Conservatoire royal de Liège may take part in the assessments. In order to be admitted to the assessments, students must not exceed a certain percentage of unjustified absences from learning activities:

- Activities of the EU Music Area "directed ensembles": 5%
- Activities of the EU Music Area "autonomous ensembles": 20%
- All activities of the other EUs of both Domains: 50%.

In the absence of a legitimate reason, the validity of the excuse may be assessed by the teacher of the course where the absence is noted. If the excuse is not considered valid by the teacher, the student may appeal to the Academic Authorities.

Assessments for the first term will take place on **JANUARY 2023** and those for the second term will take place from **MAY to JUNE 2023**.

All artistic assessments and oral examinations are open to the public in accordance with the security and health measures in force. The full schedule of assessments (times, rooms) is published several weeks before the start of the assessment period on the school's website. It is also displayed in the main hall.

At the end of the deliberations, you can consult your marks for each course on the **HORIZON STUDENT** website (under Annual Programme). Certificates of achievement can be sent to you in pdf format on request to: service.etudes@crlg.be.

Any appeal relating to any irregularity, other than cheating or plagiarism, in the conduct of the assessments must be sent by registered post to the secretary of the cycle jury, at the latest within three working days of the notification of the results of the assessments. The appeal may also be submitted in writing to the secretary. In this case, an acknowledgement of receipt is issued. The secretary of the jury will investigate the appeal and, within two working days of receipt, report to the president of the jury. Within one working day of receiving the report, the jury president will call a meeting of the members of the Studies Committee who are not involved in the irregularity in question. The Studies Committee decides immediately on the regularity of the tests, by means of a formally motivated decision notified to the complainant(s) within two working days.

RESULTS

The teacher or artistic jury uses the following grading scale to assess the student:

18 to 20	The greatest distinction
16 to 18	High distinction
14 to 16	Distinction
12 to 14	Satisfaction
10 to 12	Sufficient
Under 10	Insufficient

The results of the deliberations are displayed in the main hall and published on the Conservatory website in June for the first session and in September for the second session.

DIPLOMAS AND CERTIFICATES

Diplomas attesting to academic degrees and certificates of successful completion of studies are issued by the juries set up by the academic authorities within three months of the proclamation at which the academic degree was conferred. Once the student has received, against acknowledgement of receipt, his/her diplomas, he/she is the sole custodian of them. **Under no circumstances will the Conservatoire royal de Liège issue duplicates.**

To obtain documents relating to your studies at the Conservatoire royal de Liège (certificate of attendance, diplomas, etc.), please contact the studies department: service.etudes@crlg.be.

4/ INTERNATIONAL RELATIONS

Through the European Erasmus+ programme and other bilateral exchange programmes with non-European countries, teachers, students and administrative staff can spend time in other arts institutions abroad in order to complete their training and gain exposure to other cultures. Within the framework of the Erasmus+ programme, students have the opportunity to spend a semester or a full year abroad. These programmes also make it possible to welcome foreign students and teachers who wish to complete their training at our school.

More than 40% of the students at the Conservatoire royal de Liège are foreigners.

ERASMUS +

The Conservatoire royal de Liège is a holder of the [Erasmus Charter for Higher Education 2021-2027](#). Consult the [international strategy of the Conservatoire royal de Liège \(Erasmus+ Policy Statement - International Strategy\)](#).

► [Testimonials from students and teachers who benefited from the Erasmus+ programme at the Conservatoire royal de Liège in 2020-2021](#)

Students mobility incomings

Would you like to become an exchange student at the Conservatoire royal de Liège ? Are you from one of the 27 EU member countries or from Iceland, Liechtenstein, Macedonia, Norway, Turkey, UK and Switzerland? Then you can apply for an Erasmus+ scholarship to study with us, and get all your credits back home (or to participate as " Young Graduate student ")!

If you are interested, make sure to contact your International Office to ask for the procedure and deadlines of your home university.

► [Incoming students guide - Erasmus + | MUSIC](#)

► [Incoming students guide - Erasmus + | THEATER](#)

For more information: relations.internationales@crlg.be



5/ LANGUAGE

The official instruction language of the “Conservatoire royal de Liège” is French. However, some teachers might use another language (English, Dutch or German) for one-to-one courses and courses taught in small groups like instrument or chamber music.

The minimum level of French language proficiency required is B1. Erasmus+ students must commit to improving their language level during the year.

Lessons are provided by the “ULiège -Université de Liège”, free of charge and receiving 5 ECTS by semester automatically add it to your Learning Agreement, if you pass the evaluations successfully. The French lessons are organized by semester:

- o from September 2022 to February 2023 ;
- o from February to June 2023.

The University of Liege also organises French courses in the evening.

For more information: https://www.islv.uliege.be/cms/c_10737813/en/islv-night-classes



1/ THE CONSERVATORY'S EVENTS

CONCERTS, MASTER CLASSES, CONFERENCES...

Every year, the Conservatoire royal de Liège organises around one hundred events within the school or in partnercultural institutions. Free of charge and open to all, the numerous **CONCERTS** allow the students to regularly confront a varied public. Symphonic orchestra, chamber music ensemble, class concerts, open stage for students, the varied formulas are also an opportunity for music lovers and the curious to discover the school's talented musicians.

MASTER CLASSES and workshops allow students to meet a personality from the music world for a day or more to complete their training.

The Conservatoire royal de Liège also organises **CONFERENCES** with professionals on various subjects (musicology, music pedagogy, teaching in academies, etc.).

The complete agenda of events organised by the Conservatoire royal de Liège can be consulted via the school's various communication channels (shared agenda, internal posting, newsletter, website, social networks, etc.).

For more information see the Conservatory's events on our [website](#) or [Facebook](#).

THE SYMPHONY ORCHESTRA

An essential element in the training of the future professional musician, the Royal Conservatory of Liège Symphony Orchestra, directed by Patrick Baton, allows students to acquire significant experience in instrumental practice within an orchestra. All students participate in several sessions during their schooling, taking on increasingly responsible positions as their skills mature. Each year, two free orchestra sessions are organized in the Philharmonic Hall of Liège. The fall session is often devoted to small ensembles and works of the 20th century, while in the spring, the orchestra performs the greatest symphonies of the classical and romantic periods.

THE WIND BAND

The wind orchestras musical tradition is very much alive in many regions, and particularly in the province of Liege and Wallonia. Harmonies, fanfares and brassbands are for a large public the place of first contact with the musical world and allow many young and less young people to make music, to live it, while weaving many social links. From the point of view of its repertoire, the field of wind orchestras is undoubtedly one of those that have evolved the most over the last 30 years. Previously confined mainly to transcriptions and popular music, it has gradually expanded with the emergence of specialist composers who have redoubled their creativity to help establish a specific repertoire that today is of unequalled quality.

Directed by Olivier Haas, **the Wind Band of the Conservatoire royal de Liège** is a meeting place for Conservatoire students, former students, academy students and amateur musicians. Each year, it presents a concert in the spring.

OPEN HOUSE DAY

The Conservatoire royal de Liège's Open Day showcases the orientation, resources and talents of our school. It allows future students to find out about the different courses, meet the teachers, attend visits and concerts and take part in workshops. This day is also an opportunity for music lovers and the curious to discover the Conservatoire royal de Liège by participating in various activities: concerts, visits, lectures, workshops, etc.

For more information see the Conservatory's events on our [website](#) or [Facebook](#).



THE ROYAL PHILHARMONIC ORCHESTRA OF LIÈGE AND THE ROYAL OPERA OF WALLONIA

TRAINING

Historical partners of the Conservatoire royal de Liège, the OPRL (Orchestre Philharmonique Royal de Liège) and the ORW (Opéra Royal de Wallonie). Our students can participate in their music productions by way of a traineeship. Auditions and participation in these projects allow students to complete their training with valuable professional experience.

PREFERENTIAL RATES

The OPRL offers €1 tickets for students, teachers and administrative staff for all concerts of the season. Students are entitled to one seat per concert (for themselves) and can also benefit from a 50% discount for under-26s (without placement restrictions). Seating on the day of or the day before the concert is subject to availability.

The ORW offers teachers and administrative staff preferential rates on certain performances. Students receive discounts on subscriptions through the Social Council.

OPRL, Boulevard Piercot 25-27, Liège, 04 220 00 00, www.oprl.be

ORW, Place de l'Opéra, Liège, 04 221 47 22, www.operaliege.be

L'AN VERT

Located in the Outremeuse district of Liège, the An Vert is an atypical artistic venue recognised in the Cité Ardente. From the end of September to the end of June, three to four concerts are offered each week to Liège's spectators, mixing allstyles from jazz to electro or world music through classical music.

The An Vert offers yearly a carte blanche to the Conservatoire royal de Liège **ONE THURSDAY A MONTH**. L'An Vert welcomes the students on the day of the concert to rehearse in the hall and offers them catering. The concerts are offered at freeprice in order to make classical music accessible to as many people as possible.

L'An Vert, rue Mathieu Polain, 4, Liège, 04.344.47.37, <http://lanvert.be/>

UNIVERSITY PRESS

The **Espace Opéra of the Presses Universitaires** is a convivial space in the centre of Liège which organises events throughout the year (meetings, debates, conferences, etc.) in connection with the shop's editorial activities.

The Presses Universitaires welcome our students **ONCE A MONTH AT 12.30 p.m.** for a concert open to all. The concerts are based on the principle of an **OPEN SCENE**: students, with the agreement of their teacher, register with the production department. A catering is offered to them at the end of the concert. The 2022-2023 academic year, Presses Universitaires concerts will begin in January.

Presses Universitaires, Galerie Opéra, Pl. de la République française 35, Liège, 04 366 32 93,
<http://www.presses.uliege.be>

LES CHIROUX

The Liège Cultural Centre Les Chiroux offers a programme of concerts and shows, both inside and outside its walls, by local, national and foreign artists. The ambition is to offer the public the opportunity to discover current artists, to relay in the public space (Fêtes de la Musique, Tempo Color festival, etc.) various forms of contemporary musical or theatrical expression and to provide support for the creation and distribution of local artists and operators. The Chiroux auditorium is a characteristic, intimate and convivial space, which invites a programme of acoustic concerts, or those with little sound, in a variety of sectors such as jazz, folk, world music, classical, electro-acoustic...

Les Chiroux, Place des Carmes, 8, Liège, 04 223 19 60, www.chiroux.be

MUSIC SECTOR OF THE PROVINCE OF LIÈGE

RECORDING STUDIO

A partnership between the Conservatoire royal de Liège and the Province of Liège allows students at the end of their training to benefit from the recording studio under professional conditions. After visiting the studio and meeting the members of the technical team, the students have the opportunity to record themselves and to participate in the editing and mixing of their work. Eventually, the Province of Liège will support the production of an album of the best pieces by the students of the Conservatoire royal de Liège.

Recording studio, Rue des Croisiers, 15, Liège, 04/232.86.10,
www.provincedeliege.be/fr/node/223



CENTRE HENRI POUSSEUR

Founded in 1970 on the initiative of Henri Pousseur and Pierre Bartholomée, the Centre Henri Pousseur (formerly the "Centre de Recherches et de Formation musicales de Wallonie") has played a pioneering role and has been involved since its creation in the production and dissemination of electronic music and, in particular, mixed music. As a place of experimentation, exchange and contemporary realisations, the Centre Henri Pousseur welcomes projects by artists from the Wallonia-Brussels Federation, as well as from other regions of the country and from abroad. Each year, the Centre Henri Pousseur commissions several works from composers in the Wallonia-Brussels Federation and abroad. Since 2009, it has awarded the **PRIX HENRI POUSSEUR** every two years to a young laureate from a Conservatory in the Wallonia-Brussels Federation. Through its own projects, such as the **FESTIVAL IMAGES SONORES**, the CHP supports the dissemination of creations made in its studios, without neglecting the repertoire.

The Centre Henri Pousseur is located on the premises of the Conservatoire royal de Liège (Val-Benoît site). Within the framework of the partnership agreement between these two institutions, the CHP is open to students who require technical assistance to create electronic pieces. The centre provides the students with broadcasting equipment and the appropriate technical staff for concerts and exams. The collaboration is also reflected in the organisation of a concert during the *Images Sonores* festival, with creations by mixed composition students and pieces from the repertoire, performed by student instrumentalists. **Admission to all the concerts of the Images Sonores festival is free for all students of the Conservatoire royal de Liège.**

Centre Henri Pousseur, Quai Banning 5, Liège, 04 223 22 98, www.centrehenripousseur.be

□ Festival Images Sonores, www.images-sonores.be

THE LUNCHTIME CONCERTS

Since 1949, the Concerts de midi association has been offering **chamber music concerts** every Thursday at noon in the Academic Hall of the University. Students of the Conservatoire royal de Liège benefit from a **reduced rate of €3** for each concert of the season on presentation of their student card (access without reservation within the limits of available seats).

Lunchtime concerts, Academic Hall of the University of Liege, Place du 20 Août, www.midiliege.be



IV/ STUDENT LIFE

1/ CULTURAL VENUES

In addition to the partner venues mentioned in this guide, the City of Liege has many cultural venues that offer discounts for students. Get curious!

MUSIC

OPRL, Boulevard Piercot 25-27 04 220 00 00

ORW, Place de l'Opéra, 04 221 47 22

L'An Vert, Rue Mathieu Polain 4, 04.344.47.37

Les Concerts de midi, salle académique de l'Université de Liège, Place du 20 Août

Les Chiroux, Place des Carmes 8, 04 223 19 60

Les Amis des Concerts du Dimanche Matin, Rue Auguste Hock 4, 0499 25 95 30

Le Forum, Rue Pont d'Avroy 12/14, 04 223 18 18

Blues Sphere bar, Rue Surlet 37, 04 343 78 74

Jacques Pelzer club, Boulevard Ernest Solvay 493, 04 227 12 55

KulturA., Rue Roture 13

Reflektor, Place Xavier-Neujean 24, 04 340 30 80

L'Aquilone, Boulevard Saucy 25, 0496 21 50 46

L'Escalier, Rue St Jean en Isle 26

Le Garage Creative Music, Rue Marengo 27, 0488 60 77 70

Le Hangar, Quai St Léonard 43B, 0472 74 46 80

Mad Café, Parc d'Avroy 1, 04 223 16 19

La Zone, Rue Méan 27, 04 341 07 27



LIBRARIES

Bibliothèque du Conservatoire royal de Liège – Rue Forgeur 14, stephanie.fruzzetti@crlg.be

Bibliothèque des Chiroux (DVD, books, CD...) Rue des Croisiers 15, 04 279 52 20, info@bibliothequechiroux.be

Bibliothèques de la Ville de Liège

Bibliothèques de l'Université de Liège

Point culture Liège (CD, DVD) - Rue de l'Official 1-5, 02 737 19 62, liege@pointculture.be

PERFORMING ARTS (THEATRE, DANCE, CIRCUS)

Théâtre de Liège, Place du Vingt Août 16, 04 342 00 00

Théâtre Le Moderne, Rue Sainte-Walburge 1, 04 225 13 14

Le Forum, Rue Pont d'Avroy 12/14, 04 223 18 18

Le Trocadero, Rue Lulay des Fèbvres 6a, 04 223 34 44

La Cité Miroir, Pl. Xavier-Neujean 22, 04 230 70 50

Les Chiroux, Place des Carmes, 8, 04 223 19 60

CINEMAS

Les Grignoux, cinémas Sauvenière, Churchill et le Parc à Liège

Le Palace, Rue Pont d'Avroy 21, 04 224 66 50

MUSEUMS AND ART CENTRES

La Boverie, Parc de la Boverie, 04 238 55 01 (free the first Sunday of the month)

Grand Curtius, Quai de Maestricht 13, 04 221 68 17 (free the first Sunday of the month)

Musée Wittert, Place du 20 août, 04 3666 57 67 (free)

Trinkhall Museum, Parc d'Avroy 1, 04 222 32 95 (free the first Sunday of the month)

Aquarium Museum, Quai Édouard Van Beneden 22, 04 366 50 21 (free the first Sunday of the month)



Maison de la Science, Quai Édouard Van Beneden 22, 04 366 50 04 (free the first Sunday of the month)

Musée de la Vie wallonne, Cour des Mineurs, 04 279 20 31 (free the first Sunday of the month)

Les Brasseurs, Rue du Pont 26, 04 221 41 91 (free)

Espace Nord 251, Rue Vivegnis 251, 04 227 10 95 (free)

2/ SPORT

The city of Liege has many sports associations. You will find a directory on [this site](#).

To practice freely, you will find in Liege [four swimming pools](#) (Grivegnée, Sart Tilman, Jonfosse, Outremeuse), [an ice rink](#) and [numerous sports facilities](#) (sports halls, football pitches, etc.).

ULiège sports is the sports service of the University of Liege. It offers some sixty sports activities for students in higher education in the Liege region at very democratic prices.

[Full list of ULiège Sports](#)



1/ ADDRESSES AND ACCESS

SITE FORGEUR (MUSIC)

Rue Forgeur 14, 4000 Liège
04 222 03 06

Train : Liège Guillemins

Bus: Liège Charlemagne (51, 4, 20, 25, 27, 30, 48, 64, 65, 90, 94, 377) or Boulevard Piercot (2, 3)

Bicycle parking is available for students and teachers

SITE DU VAL-BENOÎT (THEATRE)

Quai Banning 5, 4000 Liège
04 226 44 53

Train : Liège Guillemins

Bus: Place du Général Leman (2, 3, 4, 9, 25, 27, 30, 48, 58, 64, 65, 90, 94, 377)

Bicycle parking is available for students and teachers

2/ OPENING HOURS

SCHOOL HOURS:

Monday: 8am - 10pm

Tuesday: 8am - 10pm

Wednesday: 8am - 10pm

Thursday: 8am - 10pm

Friday: 8am - 9pm

Saturday: 10am - 3pm

Sunday: 10am - 3pm

TIMETABLES DURING SCHOOL HOLIDAYS (OUTSIDE THE CLOSING PERIOD):

Monday: 9am - 5pm

Tuesday: 9am - 5pm

Wednesday: 9am - 5pm

Thursday: 9am - 5pm

Friday: 9am - 5pm

The closing time is the actual closing time of the buildings. Occupants are requested to leave the premises 15 minutes before the time indicated.



ANALYSIS AND WRITING

Edward VANMARSENILLE (Writing)

Fabian BALTHAZART (In-depth analysis)

Jean-Marie RENS (In-depth analysis)

Virginie TASSET (In-depth analysis)

Paul DELBEUCK (In-depth analysis)

Rémy DECHAMBRE (Writing)

Gauthier BERNARD (Scriptures)

Thomas GROENWEGHE (Writing)

Fabien MOULAERT (Writings)

Philippe PREUDHOMME (Practical harmony)

Benjamin THILL (Practical harmony)

SINGING

Véronique SOLHOSSE

Sabine CONZEN

Céline SCHEEN

Natacha KOWALSKI

Thibaut LENAERTS

Stéphane DE MAY (Piano singers)

Aurélie GILMARD (Piano singers)

Jean-Philippe LEJEUNE (Diction -Orthophony)

Patrick BRUL (stage movement)

KEYBOARDS

Étienne RAPPE (Piano)

Jean SCHILS (Piano)

Alexandre GURNING (Piano)



Gabriel TECLU(Piano)
Florian NOACK (Piano)
Nadia JRADIA (Piano)
Christophe MEUNIER (Piano)
Damien GIRS (Piano accompaniment)
Arnaud VAN DE CAUTER (Organ)
Edward VANMARSENILLE (Practical harmony - Continuous bass & Organ improvisation)
Anne-Michele SCHAAK (Reading and transposition - Piano)
Léopold BIDAINE (Reading and transposition - Piano)
Artur BURMISTROV (Accompanist)
Grégory DEBOULLE (Accompanist)
Stéphane DE MAY (Accompanist)
Johan DUPONT (Accompanist)
Kimiko NISHI (Accompanist)
Peter PETROV (Accompanist)
Sara PICA VET (Accompanist)
Laurette PRETE (Accompanist)
Nina SENÉ (Accompanist)
Michel STAS (Accompanist)
Mana YUASA (Accompanist)

STRINGS

Eric MELON (Violin)
Mark BOUCHKOV (Violin)
Philippe KOCH (Violin)
Damien PARDOEN (Violin)
Stéphanie DE FAILLY (Violin)
Emilio MECENERO (Violin)
Pierre-Henri XUEREB (Viola)
Sarah CHARLIER (Viola)
Sébastien WALNIER (Cello)
Jean-Pierre BORBOUX (Cello)
Joanna OLLE (Cello)
Eric MATHOT (Double bass)



Hughes KOLP (Guitar)
Adrien BROGNA (Guitar)
Vincent BEER-DEMANDER (Mandolin)
Primor SLUCHIN (Harp)
Maurizio BOSONE (Reading and transposition - Strings)
Pia SALVIA (Reading and transposition - harp)
Philippe DOYEN (Reading and transposition - Guitar)

WIND (WOOD)

Toon FRET (Flute)
Ine VANOEVEREN (Flute)
Lieve GOOSSENS (Flute - piccolo)
Sébastien GUEDJ (Oboe)
Benoît VIRATELLE (Clarinet)
Nele TIEBOUT (Saxophone)
Philippe UYTTEBROUCK (Bassoon)
Philippe RANALLO (Trumpet)
Alain PIRE (Trombone)
Gérald EVRARD (Trombone)
Nicolas VILLERS (Trombone)
Olivier HAAS (Tuba)
Mathieu ROSKAM (Reading and transposition - Woodwind)
Benjamin CHARTRE (Reading and transposition - Brass)
Rafaël MACALUSO (Brass ensemble)

PERCUSSIONS

Gerrit NULENS
Ruben MARTINEZ ORIO
Luk ARTOIS
Patrick DORCEAN



COMPOSITION

Michel FOURGON

Gilles GOBERT

Jean-Yves COLMANT

Franck BOVET

Gilles DONEUX

Stefan HEJDROWSKI

Daan JANSSENS

François COUVREUR

CONDUCTING AND CHORAL CONDUCTING

Patrick BATON

Cyril ENGLEBERT

MUSICAL TRAINING

Françoise DUMONT

Vinciane GOFFIN

Gwenaëlle LODOMEZ

Dominique LOREA (Specialised methodology)

Julie MEYS (Specific musical training)

Ariane CRESPIE (Rhythm and movement)

Geneviève CARLI (Accompaniment, group musical practice and practical harmony)

Fanny VANDENBERGH (Creativity)



IMPROVISED MUSIC OF ORAL TRADITION

Michel MASSOT (Improvisation)

Fabian FIORINI

Rudy MATHEY

Johan DUPONT

Alexander GURNING

CHAMBER MUSIC

François DEPPE

Jean-Gabriel RAELET

Vincent ROYER

Maria BARANOWSKA

Audrey GALLEZ

Thibaut LENAERTS

Dina MEUNIER

Kimiko NISHI

Gabriel TECLU

Olivier VANDERSCHAEGHE

Gabriel ARIAS

Zhuojun CHEN

François COUVREUR

Sofia GANTOIS

Élodie LAMBERT

Rudy MATHEY

GROUP COURSES

Gerrit NULENS

Ruben MARTINEZ ORIO

Luk ARTOIS

Patrick DORCEANLuc BAIWIR (Introduction to Psychology & Marketing)



Frédéric COLLINET (General didactic)
Dylan DACHET (General Psychopedagogy)
Gilles DONEUX (Acoustics)
Michel FOURGON (History of music & Comparative history of arts)
Alain FRANCO (Training in contemporary languages)
Stéphanie FRUZZETTI (Encyclopedia of music)
Catherine GRIFNEE (Psychopedagogy)
Yseult KERVYN (TFE manager)
Brigitte LECLERCQ (Educational Psychology)
Joanne LEENS (Preparation of internships)
Jean-Louis MIGEOT (Acoustics and instrument making)
Jean-Marie MARCHAL (History of music)
Jean-Marc ONKELINX (Auditions with commentary - Organology - Seminars, visits, concerts)
Denis PIERET (Introduction to philosophy)
Cyril ENGLEBERT (Ensemble singing)
Eric THERER (Legal aspects)
Stéphanie VANDERVOST (Introduction to sociology)